



Wuhu Jiahong New material Co., LTD

TEMPERATURE CONTROL PRODUCT INTRODUCTION

2024

BRING WARMTH TO THE WORLD



CONTENTS

01 PAGE
COMPANY PROFILE

06 PAGE
ET-85/85 ^{AU}

03 PAGE
MT-26

07 PAGE
ET-61/62

04 PAGE
ET-43/44

08 PAGE
ET-63

05 PAGE
TT-16/ST-16

09 PAGE
ET-72



10 PAGE
ET-72 AU

14 PAGE
ET-7A AU

11 PAGE
ET-84

12 PAGE
ET-82

13 PAGE
ET-7A



“Your Reliable Smart Controller Supplier”

Wuhu Jiahong New Material Co.,Ltd

Wuhu Jiahong New Material Co. Ltd is a professional manufacturer in Asia-Pacific established in 2002. Jiahong is a national high-tech enterprise integrating design, research and development, production, sales and engineering service guidance. It has 1 manufacture base, 1 R&D centre, 14 sales offices and 2 overseas joint ventures total more than 400 employees.



1500
Dust-free plant



400+
Employee





Wuhu Jiahong New Material Co. Ltd owns a dust-free workshop covers an area of 1,500 square meters. The whole workshop is equipped with a standard FFU system to monitor the air quality in real time so effectively maintain a dust-free environment. The workshop is also equipped with most advanced production equipment in the industry of PanasonicNPM placement machine, JT lead-free reflow and nitrogen wave soldering, plug-in & welding lines, lean U-shaped assembly lines. Jiahong's daily output of thermostats is 1500 sets and export thermostats to Europe and North America with an annual sales of 300,000 sets.



Jiahong also has a professional R&D team of 15 engineers for smart controller development, till now we already launched more than 30 thermostat controllers. Our thermostat controllers are approved by CE, UKCA, EAC in European Market, cETLus in North America market. We offer 2 years limited warranty for all thermostat controller products.



We warmly welcome you to join us, to make the world warmer and smarter.





MT26

SHINING POINT



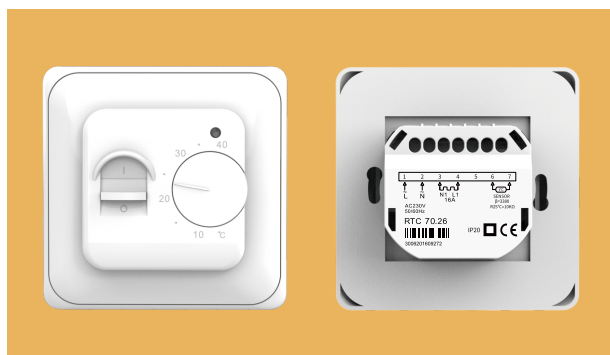
Knob
control



Heating
light



Toggle
switch



PRODUCT DESCRIPTION

The MT26 is a mechanical thermostat used to control electrical underfloor heating system. Simple operation, no need for extra Settings, Function stable and reliable. It keeps your home at comfortable temperature.

TECHNICAL PARAMETERS

Supply Voltage	110/230 Vac 50/60 Hz	IP Rating	IP20
Max Load	16A for Electrical Heating	Dimensions(H/W/D)	86*86*50(mm)
Standby Power	< 5W	Wire Diameter	≤2.5mm ²
Setting Range	5~ 40°C	Color	White & Black ...
Approval	CE UKCA	Warranty	2 years

ET-43/44

PRODUCT DESCRIPTION

ET-43/44W series thermostat are divided into Non-WIFI model and WiFi smart model. The Non-WIFI version ET-43 can meet the basic needs of users for temperature control, while the new WiFi smart version ET-44W provides more intelligent functions.

SHINING POINT



Compatible with multiple frames



Compatible with multiple sensors



Anti-frozen



Non-WIFI model



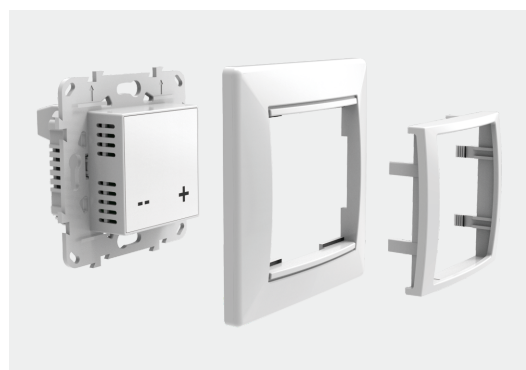
WiFi smart model

ET-43/44 MAIN FEATURES

- Fit in 3 different frame types
- 9-level adjustable standby brightness
- 4 Sensor types compatible
- Key-lock
- Anti-frozen
- Floor temperature limit
- Room/Floor Sensor selection

ET-44W MAIN FEATURES

- Auto/Hold/Holiday mode
- Weekly programmable 5+1+1/7 with 4-event per day
- Adaptive function
- Energy use
- APP remote access



Compatible with both straight and circular middle frames

TECHNICAL PARAMETERS

Supply Voltage	120-240 Vac 50/60 Hz	IP Rating	IP21
Max Load	16A(Resistive load)	Dimensions(H/W/D)	84*84*49(mm)
Standby Power	< 1W	Wire Diameter	<2.5mm ²
Setting Range	5~40°C	Color	White & Black...
Approval	CE	Warranty	2 years





TT-16/ST-16

PRODUCT DESCRIPTION

The TT16/ST16 series are two classically designed intelligent programmable thermostats for controlling electric underfloor heating systems. The two products have the same function, among which, ST-16 is operated by physical buttons, and TT-16 is operated by touch screen, with reliable function and simple appearance.

SHINING POINT



Window opening detection



Adaptive function



Sensor selection

ST-16

MAIN FEATURES

- Auto/Hold mode
- Key-lock
- Anti-frozen
- Floor temperature limit
- Sensor selection



TT-16



- Weekly programmable 5+1+1/7/6+1 with 6-event per day
- Open windows detection
- Adaptive function

TECHNICAL PARAMETERS

Supply Voltage	230 Vac 50/60 Hz	IP Rating	IP20
Max Load	16A for Electrical Heating	Dimensions(H/W/D)	86*90*43(mm)
Standby Power	< 2W	Wire Diameter	<2.5mm ²
Setting Range	5 ~90°C	Color	White & Black...
Approval	CE UKCA	Warranty	2 years

ET-85

PRODUCT DESCRIPTION

ET-85W series is a smart programmable thermostat used to control electrical under-floor heating system or water heating system. It will keep your home at comfortable temperature whilst minimizing energy use. Install the free app on your smart phone to control your electrical heating system remotely with the WiFi thermostat.

ET-85 AU

SHINING POINT



Patented magnetic connection



Compatible with multiple frames



Compatible with multiple Sensor



MAIN FEATURES

- HD VA display screen
- Patented magnetic connection
- Mechanical on/off switch
- Fit in 26+ different frame type
- Support 2 remote sensor connection
- Startup Wizard
- Home/office location optional
- Auto/Manual/Anti-frozen mode
- Key-lock
- Weekly programmable 5+1+1/7 with 4-event per day
- Floor temperature limit
- Sensor selection
- Readout Open window detection
- Adaptive function
- APP remote access



TECHNICAL PARAMETERS

Supply Voltage	85-265 Vac 50/60 Hz	IP Rating	IP21
Max Load	16A for Electrical Heating, 3A for Water Heating	Dimensions(H/W/D)	86*86*45(mm)
Standby Power	< 2W	Wire Diameter	< 2.5mm ²
Setting Range	5~40°C	Color	White & Black...
Approval	CE	Warranty	2 years





ET-61/62

PRODUCT DESCRIPTION

ET-61/62 is a smart thermostat used to control your electrical underfloor heating system. It will keep your home at comfortable temperature whilst minimizing energy use. ET-61W/62W is a WiFi version for wireless connection. You can install the app on your smart phone to control your electrical heating system remotely.



SHINING POINT



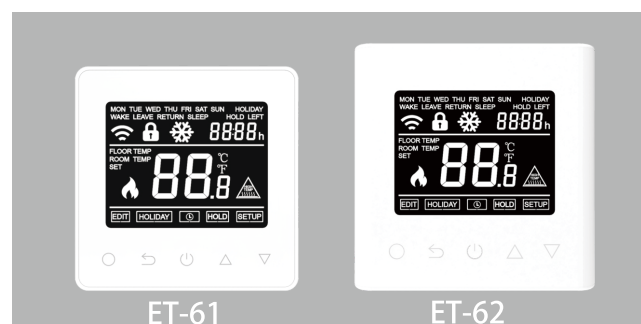
Window opening detection



Adaptive function



Sensor selection



ET-61

ET-62

MAIN FEATURES

- HD VA display Screen
- Auto/Hold/Holiday mode
- Key-lock
- Anti-frozen
- Floor temperature limit
- Room/Floor Sensor selection
- Weekly programmable 5+1+1 with 4-event per day
- Open window detection
- Adaptive function
- APP remote access

TECHNICAL PARAMETERS

Supply Voltage	85-265 Vac 50/60 Hz	IP Rating	IP21
Max Load	16A for Electrical Heating, 3A for Water Heating	61/62 Dimensions(H/W/D)	86*86*42(mm) 96*96*42(mm)
Standby Power	< 2W	Wire Diameter	< 2.5mm ²
Setting Range	5~40°C	Color	White & Black...
Approval	CE	Warranty	2 years

ET-63

PRODUCT DESCRIPTION

The ET-63 is not only a thermostat, but also adds an independent timing system, which can be used in more scenarios:

Residential: gas boilers, electric towel racks, basement and outdoor lighting management, automatic spray management, and some aquarium equipment management.

Inside the building: toilet automatic ventilation, main hall lighting.

Shop: window neon management.

In addition, when it is used as a thermostat, we add an additional sensor interface.



MAIN FEATURES

- HD VA display SScreen
- Auto/Hold/Holiday mode
- Key-lock
- Anti-frozen
- Floor temperature limit
- Sensor selection
- Two external sensors (air/floor)
- Weekly programmable 5+1+1 with 4-event per day
- Open window detection
- Adaptive function
- APP remote acegss
- Luminous keying
- Timer system

TECHNICAL PARAMETERS

Supply Voltage	85-265 Vac 50/60 Hz	IP Rating	IP21
Max Load	16A for Electrical Heating, 3A for Water Heating	Dimensions(H/W/D)	86*86*38(mm)
Standby Power	< 2W	Wire Diameter	<2.5mm ²
Setting Range	5~40°C	Color	White & Black...
Approval	CE UKCA	Warranty	2 years

SHINING POINT



Timer system



Luminous keying



Two external sensors(air/floor)



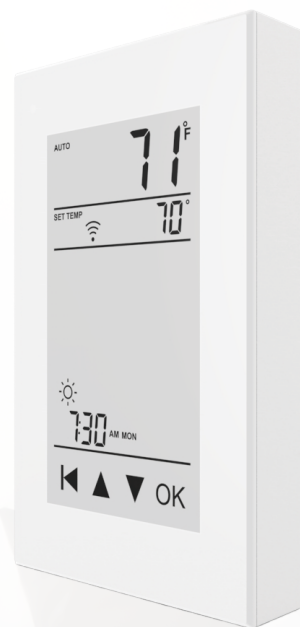
Thin design



ET-72

PRODUCT DESCRIPTION

ET-72 series is a smart programmable thermostat used to control electrical underfloor heating system. Install the free app on your smart phone to control your electrical heating system remotely with the WiFi thermostat. It keeps your home at comfortable temperature whilst minimizing energy use. Products sold in North America are GFCI enabled.



MAIN FEATURES

- 4.0 inch HD VA display screen
- Auto/Hold/Holiday mode
- Key lock
- Anti-frozen
- Floor temperature limit
- Sensor selection
- Weekly programmable 5+1+1 with 4-event per day
- Open windows detection
- Adaptive function
- APP remote access
- GFCI protection

• External independent control module
 • Multiple sensors, including room, floor, outdoor, and window sensors

SHINING POINT



Class A



Independent control output



Glass touch panel



4.0 inch

TECHNICAL PARAMETERS

Supply Voltage	120/240 Vac 50/60 Hz	IP Rating	IP21
Max Load	16A for Electrical Heating	Dimensions(H/W/D)	123*75*43(mm)
Standby Power	< 2W	Wire Diameter	<2.5mm ²
Setting Range	5~40°C	GFCI	Class A (5mA trip level)
Approval	CE ETL	Warranty	2 years

ET-72 AU

PRODUCT DESCRIPTION

ET-72 series is a smart programmable thermostat used to control electrical underfloor heating system. Install the free app on your smart phone to control your electrical heating system remotely with the WiFi thermostat. It keeps your home at comfortable temperature whilst minimizing energy use.

SHINING POINT



Adaptive function



Window opening detection



Glass touch panel



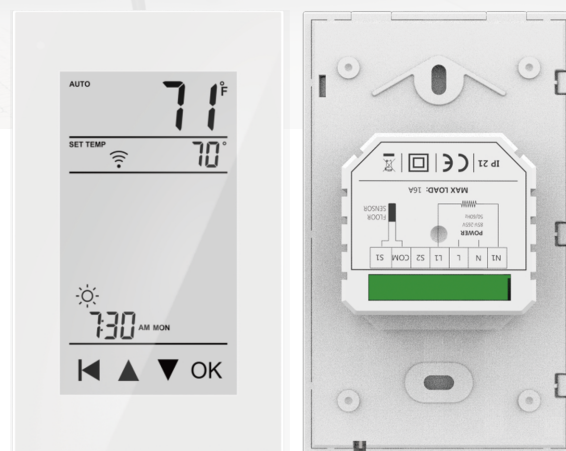
4.0 inch

MAIN FEATURES

- 4.0 inch HD VA display screen
- Auto/Hold/Frost mode
- Key-lock
- Anti-frozen
- Floor temperature limit
- Sensor selection
- Weekly programmable 5+1+1/7 with 4-event per day
- Open windows detection
- Adaptive function
- APP remote access

TECHNICAL PARAMETERS

Supply Voltage	85~265 Vac 50/60 Hz	IP Rating	IP21
Max Load	16A for Electrical Heating	Dimensions(H/W/D)	123*75*43(mm)
Standby Power	< 2W	Wire Diameter	<2.5mm ²
Setting Range	5~40°C	Color	White & Customization
Approval	CE UKCA	Warranty	2 years





ET-84

PRODUCT DESCRIPTION

ET-84W series is a smart thermostat used to control electrical underfloor heating system or water heating system. It keeps your home at comfortable temperature whilst minimizing energy use. Install the free app on your smart phone to control your electrical heating system remotely with the WiFi thermostat.

MAIN FEATURES

- 2.8 inch color screen
- Auto/Hold/Holiday mode
- Key-lock
- Brightness adjustable
- Anti-frozen
- Floor temperature limit
- Sensor selection
- Weekly programmable 5+1+1/7
- with 4-event per day
- Open window detection
- Adaptive function
- Multiple language
- APP remote access
- Energy use



ET-84

SHINING POINT



Touch
color screen



2.8-inch



Multiple
language

TECHNICAL PARAMETERS

Supply Voltage	85-265 Vac 50/60 Hz	IP Rating	IP21
Max Load	16A for Electrical Heating, 3A for Water Heating	Dimensions(H/W/D)	86*86*42(mm)
Standby Power	< 2W	Wire Diameter	< 2.5mm ²
Setting Range	5~40°C	Color	White & Black...
Approval	CE UKCA EAC	Warranty	2 years





ET-82

PRODUCT DESCRIPTION

ET-82 series is a smart programmable thermostat used to control electrical underfloor heating system or water heating system. It will keep your home at comfortable temperature whilst minimizing energy use. Install the free app on your smart phone to control your electrical heating system remotely with the WiFi thermostat.

SHINING POINT



MAIN FEATURES

- Large touch color screen
- Auto/Manual/Holiday mode
- Brightness adjustable
- Open window detection
- Anti-frozen
- Floor temperature limit
- Energy use.
- Multiple sensor type compatible
- Weekly programmable 5+1+1/7 with 4-event per day
- Adaptive function
- APP remote access

TECHNICAL PARAMETERS

Supply Voltage	85-265 Vac 50/60 Hz	IP Rating	IP21
Max Load	16A for Electrical Heating, 3A for Water Heating	Dimensions(H/W/D)	136*94*41(mm)
Standby Power	< 2W	Wire Diameter	< 2.5mm ²
Setting Range	5~40°C	Color	White & Black...
Approval	CE UKCA	Warranty	2 years

ET-7A



PRODUCT DESCRIPTION

ET-7A series is a smart programmable thermostat used to control electrical underfloor heating system. Install the into North American version and Australian version, of which the North American version is with GFCI protection



3.5-inch



High-resolution



Touch
color screen

MAIN FEATURES

- Auto/Manual/Away mode
- Brightness adjustable.
- Weekly programmable 5+1+1/7 with 4-event per day
- Energy use
- Multilingual switching
- ★ External independent control module:

If an electric floor heating cable or mat system requires more than 15 Amps, install a power module.

TECHNICAL PARAMETERS

Supply Voltage	120/208/240 Vac 50/60 Hz	IP Rating	IP21
Max Load	15A for Electrical Heating	Dimensions(H/W/D)	130*81.5*50(mm)
Standby Power	< 2W	Wire Diameter	<2.5mm ²
Setting Range	5~40°C	GFCI	ClassA (5mA trip level)
Approval	CE	WIFI module	2.4G+5G





ET-7A ^{AU}

free app on your smart phone to control your electrical heating system remotely with the WiFi thermostat. It is divided function, and they use color screen touch mode.

- Multiple sensor type compatible
- Open window detection
- Adaptive function
- APP remote access
- Silicone physical key
- Weather function
- ★ GFCI protection



2.4+5G

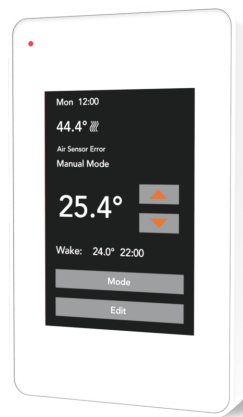


Weather function



Glass touch panel

The ★ feature is only available on the ET-7A



Supply Voltage	85-265 Vac 50/60 Hz	IP Rating	IP21
Max Load	16A for Electrical Heating, 3A for Water Heating	Dimensions(H/W/D)	123*75*40(mm)
Standby Power	< 2W	Wire Diameter	< 2.5mm ²
Setting Range	5~40°C	Color	White & Black...
Approval	CE	Warranty	2 years





Warmme APP

**General App for all
Jiahong Wifi Thermostats**

Wuhu Jiahong New Material Co., Ltd.
Professional heating cable manufacturer
www.ahjiahong.com • info@ahjiahong.com • +86-553-3887096